



Marin Wildfire Prevention Authority

New Marin Joint Powers Authority

Countywide Coalition

- Local fire agencies
- Cities and towns
- County of Marin

Working together as a single Joint Powers Authority (JPA) for comprehensive wildfire prevention and emergency preparedness



Informational Update & Feedback

- **Public Information:** created website, video, background documents, FAQs
- **Recent IJ Marin Voice**
 - Exemptions for churches & other properties classified under use code 61
 - Member agencies need fire and taxing authority
 - Voting weight 50-50%
- **Feedback: 40+** informational sessions
 - Changes reviewed by working group
 - Very positive response from public and councils/boards



Response to Feedback

Principles used to make changes:

- Is it good public policy?
 - Is it responsive to stakeholders?
 - Can it get support of 19 agencies & Public?
 - Does it help achieve the mission of the JPA?
-
- **Expand Governing Board and Operations Committee to all 19 members**
 - Approval requirement of both majority & 50% of represented population
 - **Provide for programmatic review every 5 years and ability to adjust program proportions**



Response to Feedback

- **Add a strong Citizens' Oversight Committee**
- **Include “Up to” in parcel tax language**
- **Added 10-year sunset** clause to the ballot language
- **80% return to source** over 5 years (operational area)
- **Local code and control** remains with local agency

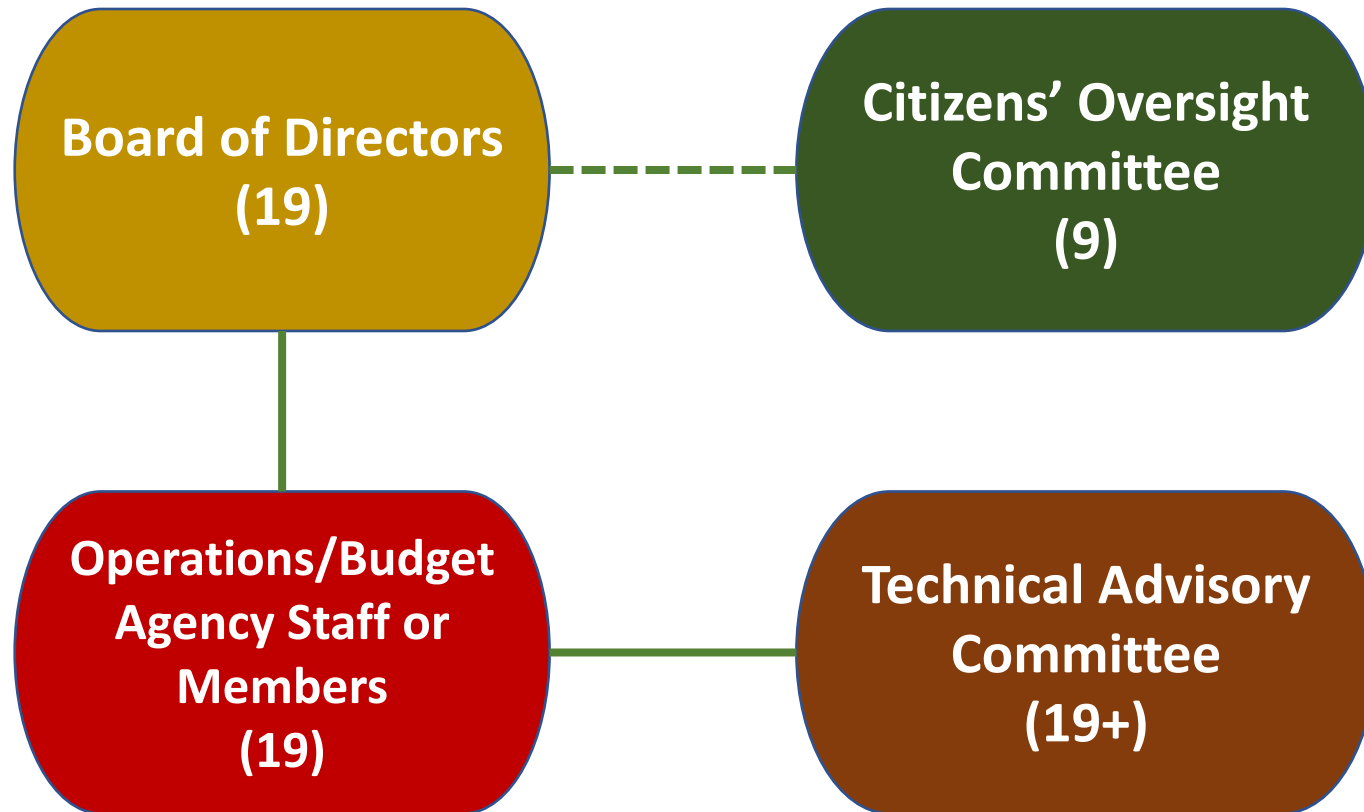


JPA Mission to Fund and Oversee

- **60% of the funding:**
 - Wildfire detection and evacuation system improvements
 - Vegetation management and fire hazard reduction
 - Grants, Public education and neighborhood wildfire preparedness
- **20% of the funding:**
 - Defensible space and home hardening evaluations
 - Senior & AFN grants
- **20% of the funding:**
 - Local specific wildfire prevention



JPA Oversight Structure



MWPA Operational Zones

5 Zones
19 Members



Program Funding

Program Area		Estimated Funding	% of Funds
JPA Core	Wildfire Detection & Evacuation Program Improvements	\$12.6 million	60%
	Vegetation Management/Fire Hazard Reduction		
	Grants		
	Public Education -- FIRESafe MARIN		
Defensible Space Evaluations – Home Hardening With option for agency to administer vs JPA		\$4.2 million	20%
Agency Specific Wildfire Prevention Mitigation		\$4.2 million	20%
Total Cost:		\$21 million	100%



Structure of Parcel Tax

- **Up to 0.10 per building square foot**
 - Improved residential and commercial
- **Multi-unit residential (3 or more units)**
 - \$75/unit
- **Unimproved parcels**
 - 0 - 0.25 acres - \$25/parcel
 - 0.25 - 0.50 acres - \$100/parcel
 - 0.50 and greater - \$150/parcel
- **Senior low-income exemption**
- **Annual inflation adjustment**
 - Bay Area CPI with 3% cap



Mandatory Fiscal Accountability

- **Citizens' Oversight Committee**
- **Independent Oversight**
 - Annual reporting of financials
 - Annual audits
- **Prioritized annual workplan and budget**



Potential Parcel Tax Measure

Ballot Language:

Marin Wildfire Prevention Measure.

To support coordinated wildfire prevention including improving early wildfire detection, warning and alerts; reducing brush and vegetation; ensuring defensible space around homes, neighborhoods and critical infrastructure; and improving disaster evacuation routes/procedures; shall the Marin Wildfire Prevention Measure, levying up to 10¢ per building square foot tax (described in the ballot pamphlet) for 10 years, providing \$21,000,000 annually, with annual inflation adjustments, independent citizen oversight/audits, and low-income senior exemptions, be adopted?



Timeline and Next Steps

- **October 2019**

- Member agencies join JPA by 10/31
- Member agencies pass resolution requesting Board of Supervisors place parcel tax initiative on March 2020 ballot

- **November 2019**

- Board of Supervisors considers requests to place measure on ballot 11/19

- **March 3, 2020 Election**

